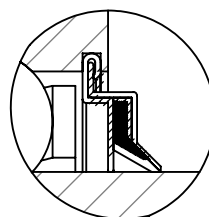
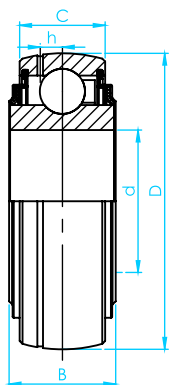


Tipo - UK-300 - Cargas Normais



Vedação F

BRM

Ø do Eixo (d) mm	Rolamento	Capacidade de Carga					
		Dinâmica C (N)	Estática Co (N)				
		D	B	C	h		
		mm	mm	mm	mm		
25	UK305	62	27	21	6.2	2280	1170
30	UK306	72	30	24	6.5	2760	1550
35	UK307	80	33	25	7.2	3420	1960
40	UK308	90	35	28	8.5	4140	2450
45	UK309	100	38	30	9	5410	3250
50	UK310	110	40	32	9.9	6300	3860
55	UK311	120	43	34	10.6	7300	4570
60	UK312	130	47	36	11.3	8330	5290
65	UK313	140	49	38	12.1	9580	6170
75	UK315	160	55	42	13.5	11570	7840
80	UK316	170	55	44	14.5	12540	8830
85	UK317	180	60	46	15.5	13530	9850
90	UK318	190	60	48	16.5	14590	11020
95	UK319	200	66	50	16.7	15920	12450
100	UK320	215	68	51	19	17510	14290