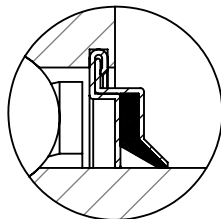
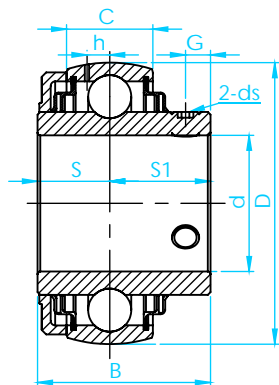
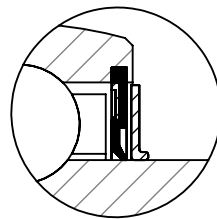


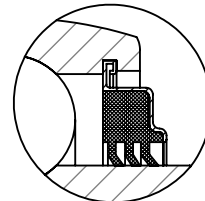
Tipo - UC-300 - Cargas Normais



Vedação F



Com Defletor Metálico



Vedação R3

BRM

Ø do Eixo (d)		Rolamento	D mm	B mm	C mm	S mm	S1 mm	G mm	h mm	ds mm	Capacidade de Carga	
mm	Pol.										Dinâmica C (N)	Estática Co (N)
25	7/8	UC305-14	62	38	21	15	23	6	6,2	M6X1	22360	11500
	15/16	UC305-15										
30	1	UC305	72	43	24	17	26	6	6,5	M6X1	27000	15200
	1 1/8	UC306-18										
	1 3/16	UC306										
35	1 1/4	UC306-19	80	48	25	19	29	8	7,2	M8X1	33500	19200
	1 5/16	UC307-20										
	1 3/8	UC307-21										
		UC307-22										
40	1 1/2	UC307	90	52	28	19	33	10	8,5	M10X1,25	40560	24000
	1 9/16	UC308-24										
		UC308-25										
45	1 5/8	UC308	100	57	30	22	35	10	9	M10X1,25	53000	31800
	1 11/16	UC309-26										
	1 3/4	UC309-27										
		UC309-28										
50	1 7/8	UC309	110	57	30	22	35	10	9	M10X1,25	61750	37800
	1 15/16	UC310-30										
		UC310-31										
55	2	UC310	120	66	34	25	41	12	10,6	M12X1,25	71500	44800
	2 1/8	UC311-32										
	2 3/16	UC311-34										
		UC311										
60	2 1/4	UC311-35	130	71	36	26	45	12	11,3	M12X1,25	81600	51800
	2 3/8	UC312-36										
	2 7/16	UC312										
		UC312-38										
65	2 1/2	UC312-39	140	75	38	30	45	12	12,1	M12X1,25	93860	60500
		UC313										
70	2 3/4	UC313-40	150	78	40	31	47	12	12,8	M12X1,25	104260	68000
		UC314-44										
75	3	UC314	160	82	42	32	50	14	13,5	M14X1,5	113360	76800
		UC315										
80		UC315-48	170	86	44	34	52	14	14,5	M14X1,5	122850	86500
		UC316										
85	3 1/4	UC317	180	96	46	40	56	16	15,5	M16X1,5	132600	96500
		UC317-52										
90	3 1/4	UG317	190	96	48	40	56,0	16	16,5	M16X1,5	143000	108000
		UC318-56										
95	3 3/4	UC318	200	103	50	41	62	18	16,7	M16X1,5	156000	122000
		UC319										
		UC319-60										
100	4	UC320	215	108	54	42	66	18	19	M18X1,5	171600	140000
		UC320-64										
110	-	UC322	240	117	60	46	71	18	21	M18X1,5	158000	178000
120	-	UC324	260	126	64	51	75	18	22	M18X1,5	175000	208000
130	-	UC326	280	135	68	54	81	20	23	M20X1,5	195000	242000
140	-	UC328	300	145	72	59	86	20	25	M20X1,5	212000	272000