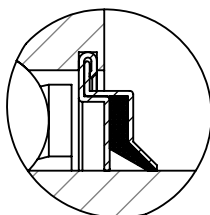
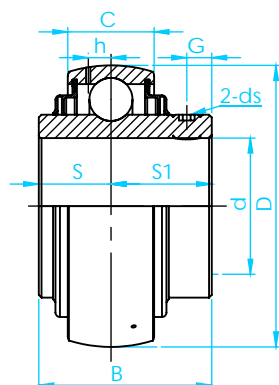
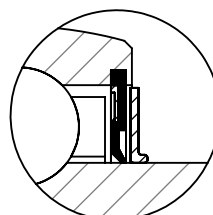


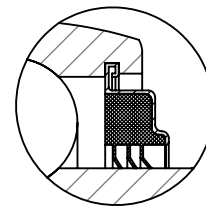
Tipo - UC-200 - Cargas Normais



Vedação F



Com Defletor Metálico



Vedação R3

BRM

Ø do Eixo (d)		Rolamento	D	B	C	S	S1	G	h	ds	Capacidade de Carga	
mm	Pol.										dinâmica C (N)	Estatica Co (N)
12	1/2	UC 201 S	40	27,4	14	11,5	15,9	4,2	3,5	M5x0.8	9550	4780
15	5/8	UC201-8S										
17	11/16	UC202S UC202-10S UC203S UC203-11S										
12	1/2	UC201	47	31	16	12,7	18,3	4,7	4,4	M6X1	12800	6650
15	5/8	UC201-8 UC202										
17	11/16	UC202-10 UC203										
20	3/4	UC203-11 UC204-12										
	1	UC204										
25	7/8 15/16	UC205-14 UC205-15 UC205	52	34	17	14,3	19,7	5,5	4,3	M6X1	14000	7880
	1	UC205-16										
30	1 1/8 1 3/16 1 1/4	UC206-18 UC206 UC206-19 UC206-20	62	38,1	19	15,9	22,2	5,5	5	M6X1	19500	11200
	1 1/4	UC207-20										
35	1 5/16 1 3/8	UC207-21 UC207-22 UC207	72	42,9	20	17,5	25,4	6,5	5,8	M8X1	25700	15200
	1 7/16	UC207-23										
40	1 1/2 1 9/16	UC208-24 UC208-25 UC208	80	49,2	21	19	30,2	8	6,3	M8X1	29600	18200
	1 5/8	UC209-26										
45	1 11/16 1 3/4	UC209-27 UC209-28 UC209	85	49,2	22	19	30,2	8	6,8	M8X1	31850	20800
	1 7/8	UC210-30										
50	1 15/16 2	UC210-31 UC210 UC210-32	90	51,6	23	19	32,6	9	6,5	M10X1.25	35100	23200
	2 1/8	UC211-32 UC211-34 UC211										
55	2 3/16 2 1/4	UC211-35 UC212-36 UC212	110	65,1	27	25,4	39,7	10,5	8,2	M10X1.25	47800	32800
60	2 3/8 2 7/16	UC212-38 UC212-39										
65	2 1/2	UC213-40 UC213										
70	2 3/4 2 11/16	UC214-44 UC 214-43 UC214	125	74,6	30	30,2	44,4	12	9	M12X1.25	60800	45000
75	2 15/16 3	UC215-47 UC215 UC215-48										
80	-	UC216	140	82,2	33	33,3	49,3	14	10,3	M12X1.25	71500	54200
85	3 1/4	UC217-52 UC217	150	85,7	35	34,1	51,6	14	11	M12X1.25	83200	63800
90	3 1/2	UC218-56 UC218	160	96	37	39,7	56,3	14	12	M12X1.25	95900	71500
100	4	UC220 UC220-64	180	108	40	42	66	16	12,1	M16X1.5	122000	92800